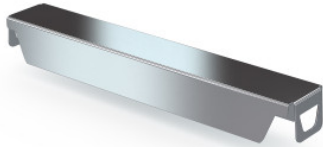


Reinforcing beam 600 mm

P/N: 0102102 | RG-VUZ/N5/N20/N25 0600

HUPFER
we make work flow

Technical data



Weight:	0.3 kg
Width:	539 mm
Depth:	38 mm
Height:	30 mm

Similar to illustration, technical modifications reserved. Without decoration.

The reinforcement beam serves to optimise the stability of a closed support.

The powerful reinforcement beam made of stainless steel ensures maximum stability of a closed support. The Hupfer reinforcement beam provides a robust and reliable solution even under heavier loads. The sturdy construction made of high-quality stainless steel guarantees a long lifespan and is easy to assemble. The reinforcement beam increases the load-bearing capacity of the support and ensures optimal weight distribution. The improved efficiency of the bearing surface creates additional space for even more goods.

Time and date of the request:
02.09.2025, 14:48:43

All information / dimensions are approximate, technical changes reserved. © Hupfer