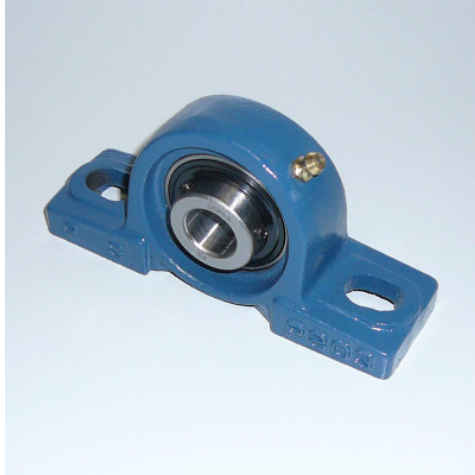


Pedestal Bearing UCP 203 127/60/38 shaft \varnothing 17 mm

HUPFER
we make work flow



Technical data

Weight: 0.1 kg

Similar to illustration, technical modifications reserved. Without decoration.

The reinforcement beams increase the stability and load capacity of the serving trolleys.

The reinforcement beams distribute the weight of the cargo evenly across the entire serving trolley. This minimises the risk of deformation or instability, especially with heavy or unevenly distributed loads. Thanks to the robust construction and the use of high-quality, recyclable stainless steel, the anti-sway bars also allow for a long lifespan and hygienic cleaning of your serving trolley, even with intensive use.

- for an even distribution of the cargo
- increases the stability and load capacity of the serving trolley
- made from high-quality, recyclable stainless steel for a long service life and hygienic cleaning

Time and date of the request:
09.02.2026, 12:43:04

All information / dimensions are approximate, technical changes reserved. © Hupfer