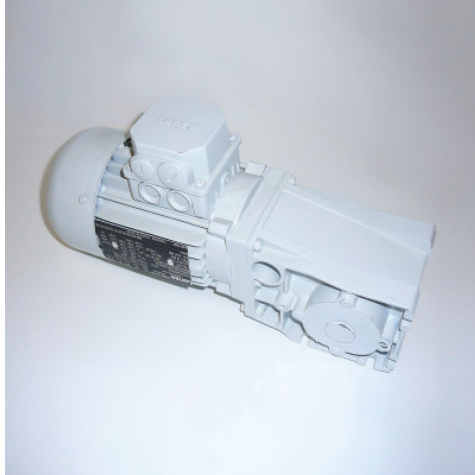


Gear motor 230/400V 50Hz 0,12KW

P/N: 0191006153

HUPFER
we make work flow



Technical data

Weight:	7 kg
Width:	123 mm
Depth:	323 mm
Height:	197 mm

Similar to illustration, technical modifications reserved. Without decoration.

The geared motor 0.12 kW is used for the efficient storage and reliable transport of mechanical components. The geared motor 0.12 kW also enables precise sorting and organisation of drive solutions in various applications.

Time and date of the request:
08.06.2025, 23:42:24

All information / dimensions are approximate, technical changes reserved. © Hupfer