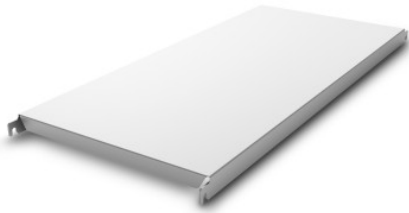


Norm 20 solid shelf 900×500 mm

P/N: 0202602 | RG-RS/N20/12 600kg 2000/300

Technical data



Modular dimension:	150 mm
Max. section load	600
Carbon footprint (TM65 Basic Report)	67 kgCO ₂ e
Weight:	2 kg
Width:	900 mm
Depth:	440 mm
Height:	40 mm

Similar to illustration, technical modifications reserved. Without decoration.

Modular shelving system made of plain anodised aluminium in hygienic design as per DIN 18868-2, suitable for continuous use at -40 to +140°F (-40 to +60 °C), for arrangement in a straight line or for angled setup with corner hooks, freely extendable lengthwise.

Uprights made of special 1.0 × 1.0" (25 × 25 mm) square tubes, connected and stabilised by press-fitted 1.6 × 0.28" (40 × 7 mm) upright spokes running crosswise. Upper covering caps made of plastic, height-adjustable screw feet for compensating floor unevennesses of up to 1.0" (25 mm) as hygienic ending of upright. Welded shelf lugs at distances of 5.9" (150 mm) for easy attaching of shelves.

Time and date of the request:
08.05.2026, 02:41:27

All information / dimensions are approximate, technical changes reserved. © Hupfer