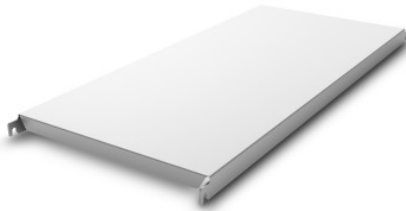


## Norm 20 solid shelf 1300×400 mm

P/N: 0202772 | RG-RS/N5 1200kg 1800/400

**HUPFER**  
we make work flow

### Technical data



<b>Modular dimension:</b>	150 mm
<b>Max. section load</b>	1200
<b>Carbon footprint (TM65 Basic Report)</b>	47 kgCO <sub>2</sub> e
<b>Weight:</b>	3 kg
<b>Width:</b>	1300 mm
<b>Depth:</b>	340 mm
<b>Height:</b>	49 mm

*Similar to illustration, technical modifications reserved. Without decoration.*

Modular shelving system made of high-quality stainless steel 1.4301 in hygienic design as per DIN 18868-2, suitable for continuous use at -40 to +140°F (-40 to +60 °C), for arrangement in a straight line or for angled setup with corner hooks, freely extendable lengthwise.

Uprights made of 1.0 × 1.0" (25 × 25 mm) square tubes, connected and stabilised by press-fitted 2.0 × 0.08" (50 × 2 mm) upright spokes running crosswise. Upper covering caps made of plastic, height-adjustable screw feet for compensating floor unevennesses of up to 1.0" (25 mm) as hygienic ending of upright. Welded ø 0.28" (7 mm) shelf bolts at distances of 5.9" (150 mm) for easy attaching of shelves.

Time and date of the request:  
30.01.2026, 15:35:27

*All information / dimensions are approximate, technical changes reserved. © Hupfer*