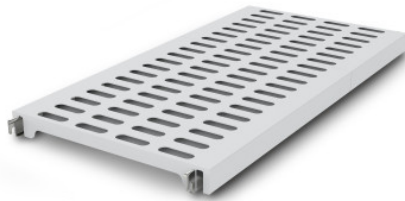


Norm 12 louvered shelf 1500×400 mm

P/N: 0601969 | A-KR/N12 1500/400

HUPFER
we make work flow

Technical data



| | |
|---|------------------------|
| Max. bay load | 100 |
| Carbon footprint (TM65 Basic Report) | 66 kgCO ₂ e |
| Weight: | 4 kg |
| Width: | 1500 mm |
| Depth: | 384 mm |
| Height: | 53 mm |

Similar to illustration, technical modifications reserved. Without decoration.

Rust protection layer made of polystyrene segments with perforation 75 × 25 mm on aluminium support beams.

The effortlessly attachable plastic grid insert provides a ventilated, secure, and very easy-to-clean surface, even dishwasher-safe. Despite its low weight, the insert for the Norm 12 shelf supports high loads. Temperatures of -30°C are not a problem even in the long term.

The materials used are sustainable, 100% recyclable, and so valuable that Hupfer guarantees to buy back your entire shelf at the end of its service life.

- Rust-proof design in plastic with low weight ensures ventilated, safe, and hygienic storage while maintaining the condition of the stored goods.
- Quality craftsmanship using high-quality plastic enables perfect hygiene and easy cleaning, even in the dishwasher.
- Valuable materials ensure sustainability and preservation of value.
- Sturdy construction guarantees high load capacity.
- Modular system ensures easy handling from assembly to cleaning with minimal effort.

Time and date of the request:
06.09.2025, 12:42:15

All information / dimensions are approximate, technical changes reserved. © Hupfer