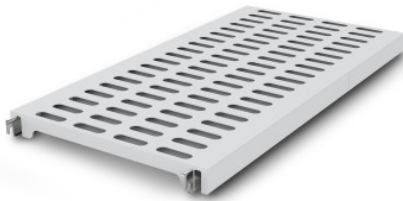


## Norm 12 louvered shelf 1500×500 mm

P/N: 0601989 | A-KR/N12 1500/500

**HUPFER**  
we make work flow

### Technical data



<b>Max. bay load</b>	100
<b>Carbon footprint (TM65 Basic Report)</b>	71 kgCO <sub>2</sub> e
<b>Weight:</b>	5 kg
<b>Width:</b>	1500 mm
<b>Depth:</b>	484 mm
<b>Height:</b>	53 mm

*Similar to illustration, technical modifications reserved. Without decoration.*

Rust protection layer made of polystyrene segments with perforation 75 × 25 mm on aluminium support beams.

The effortlessly attachable plastic grid insert provides a ventilated, secure, and very easy-to-clean surface, even dishwasher-safe. Despite its low weight, the insert for the Norm 12 shelf supports high loads. Temperatures of -30°C are not a problem even in the long term.

The materials used are sustainable, 100% recyclable, and so valuable that Hupfer guarantees to buy back your entire shelf at the end of its service life.

- Rust-proof design in plastic with low weight ensures ventilated, safe, and hygienic storage while maintaining the condition of the stored goods.
- Quality craftsmanship using high-quality plastic enables perfect hygiene and easy cleaning, even in the dishwasher.
- Valuable materials ensure sustainability and preservation of value.
- Sturdy construction guarantees high load capacity.
- Modular system ensures easy handling from assembly to cleaning with minimal effort.

Time and date of the request:  
07.09.2025, 08:31:49

*All information / dimensions are approximate, technical changes reserved. © Hupfer*