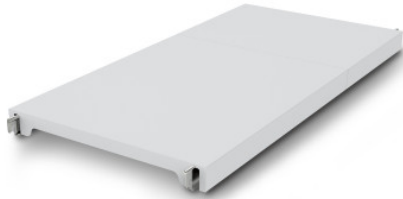


Norm 12 solid shelf 800×600 mm

P/N: 0602549 | A-GS/N12 0800/600

HUPFER
we make work flow

Technical data



Max. bay load	200
Carbon footprint (TM65 Basic Report)	37 kgCO ₂ e
Weight:	3 kg
Width:	800 mm
Depth:	584 mm
Height:	53 mm

Similar to illustration, technical modifications reserved. Without decoration.

Closed support made of polystyrene segments on aluminium carrier beams.

The effortlessly attachable, closed plastic tray offers a lightweight, safe, and very easy-to-clean surface, even in the dishwasher. This tray of the Norm 12 shelf can hold high loads despite its low weight. Temperatures of -30°C are not a problem even in the long term.

The materials used are sustainable, 100% recyclable, and so valuable that Hupfer guarantees today to buy back your entire shelf at the end of its useful life.

- Closed design in plastic with low weight ensures safe, hygienic storage and easy access at all times
- Quality workmanship from high-quality plastic allows for perfect hygiene and easy cleaning, even in the dishwasher
- Valuable materials ensure sustainability and value retention
- Stable construction guarantees high load capacity
- Modular system ensures easy handling from assembly to cleaning with minimal effort

Time and date of the request: 06.09.2025, 12:42:56 *All information / dimensions are approximate, technical changes reserved. © Hupfer*