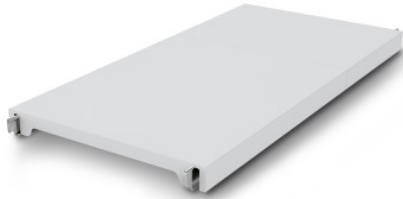


Norm 12 solid shelf 1400×600 mm

P/N: 0602829 | A-GS/N12 1400/600

HUPFER
we make work flow

Technical data



Max. bay load	100
CO₂-Fussabdruck (TM65 Basic Report)	68 kgCO ₂ e
Weight:	6 kg
Width:	1400 mm
Depth:	584 mm
Height:	53 mm

Similar to illustration, technical modifications reserved. Without decoration.

The closed plastic shelf surface of the Norm 12 shelving unit provides a lightweight, secure, and hygienic storage area for high load capacities. It is suitable for use at ambient temperatures of -30°C.

The effortlessly attachable, closed plastic tray offers a lightweight, safe, and very easy-to-clean surface, even in the dishwasher. This tray of the Norm 12 shelf can hold high loads despite its low weight. Temperatures of -30°C are not a problem even in the long term.

- Closed design in plastic with low weight ensures safe, hygienic storage and easy access at all times
- Quality workmanship from high-quality plastic allows for perfect hygiene and easy cleaning, even in the dishwasher
- Valuable materials ensure sustainability and value retention
- Stable construction guarantees high load capacity
- Modular system ensures easy handling from assembly to cleaning with minimal effort

Time and date of the request:
18.04.2026, 21:39:51

All information / dimensions are approximate, technical changes reserved. © Hupfer