

HUPFER
we make work flow

OUR NEW SUPERHERO

The endoscopy cart from Hupfer.



Scan QR code
for more information!



Excellent storage for endoscopes.

PERFECTLY ENGINEERED



Product code 7506480

5× L-shape profile rail or
4× solid shelf

Pitch: 61.5 mm
Insert dimension: 535 × 650 mm
- suitable e.g. for: 530 × 430 × 120 mm
520 × 520 × 100 mm
650 × 530 × 200 mm

Product code 7506303

10× L-shape profile rail or
7× solid shelf

Pitch: 61.5 mm
Insert dimension: 535 × 650 mm
- suitable e.g. for: 530 × 430 × 120 mm
520 × 520 × 100 mm
650 × 530 × 200 mm

IT'S ALL ABOUT THE DETAILS

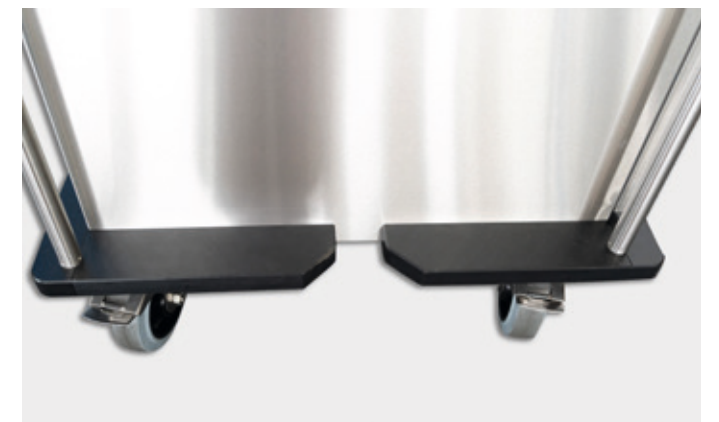
As a specialist in sterile goods logistics, we at Hupfer work to optimise your process chain to the maximum. With the new transport cart made for endoscopes, we guarantee the usual process quality for endoscopes and, of course, have the details in mind.

- **Reliable protection** of your valuable endoscopes thanks to closed design.
- **High stability and durability** thanks to complete stainless steel construction.
- **Safe storage** due to self-engaging door with sturdy stainless steel hinges, 2-point locking system, transport latch and sealing option in the upper door area
- **Optimum dust protection** for the sterile goods due to stop bar, cart profiling and hygienic lip seals.
- **Effective protection of cart and walls** due to dimensionally stable chassis and circumferential bumpers
- **Effortless transport** thanks to two swivel castors (including locks) and two fixed castors with stainless steel housing (diameter 160 mm each)



HIGH FLEXIBILITY

The double-walled hinged doors can be swivelled by up to 270° and lock automatically. So you can rely on flexible use at all times.



SMOOTH THE PATH

Two swivel castors with locks and two fixed castors (160 mm diameter) in stainless steel housing provide the right propulsion.



ROBUST

The circumferential bumper protects both the cart and on-site walls particularly effectively against damage.

INTERESTED TO HEAR MORE? LET'S TALK!



You can find a lot more
information on our
website.

We are happy to advise you.
Contact us now and make an appointment!

Hupfer Metallwerke GmbH & Co. KG
Dieselstrasse 20 · 48653 Coesfeld, Germany
Tel.: +49 2541 805-0
info@hupfer.com · www.hupfer.com

HUPFER
we make work flow