

Köhler Banquet trolley: Keeps food reliably warm and cold

Hot stays hot, cold stays cold - even without power supply

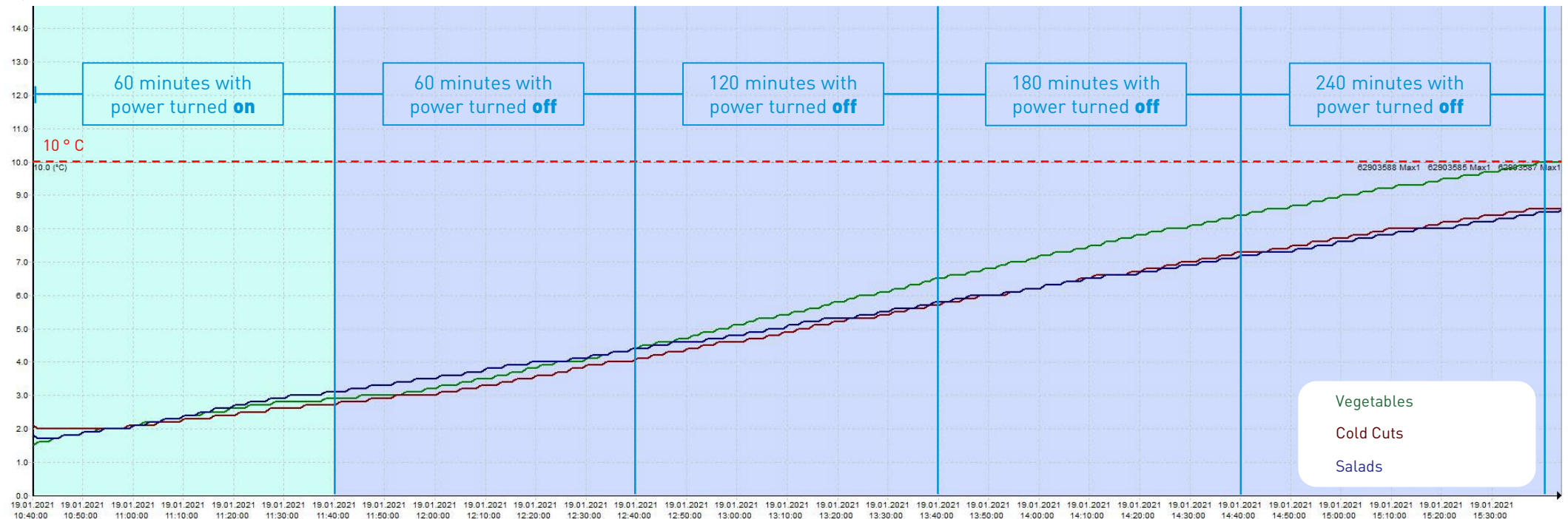
Our banquet trolleys are equipped with a special insulation that enables the transport of hot and cold food even over longer distances. If the trolleys are pre-heated or pre-cooled accordingly, the food will maintain the cold temperature **for up to four hours** or the required hot temperatures for up to 150 minutes, even when transported without power supply.

The practical test proves:

required temperatures are consistently achieved

For the practical test, the Köhler banquet trolley was first heated up or cooled down for one hour. Then GN containers with lids filled with various dishes were placed in the trolley and kept hot or cold for one hour with power supply. Then the trolley was disconnected from the power supply and the food was kept warm or cooled for several hours independently of the power supply. **Hot food in GN containers (with lids) loses an average of 4 Kelvin per hour and cold food temperatures rise by an average of 2 Kelvin per hour.**

°C Cold temperatures food – BKW 1/40 B-GN-57,5 UK



Köhler Banquet trolley: Keeps food reliably warm and cold

Hot temperatures food – BKW 1/36 B-GN-57,5 GB

