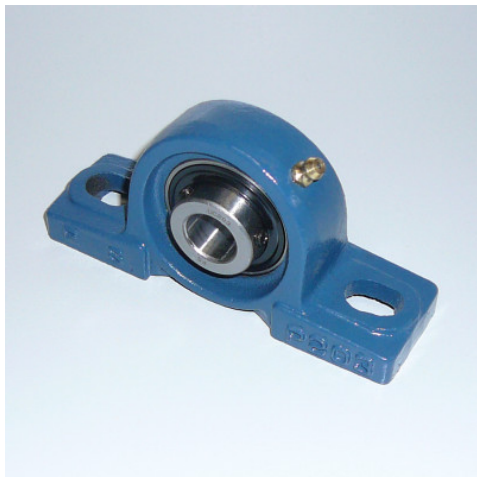


## Pedestal Bearing UCP 203 127/60/38 shaft $\varnothing$ 17 mm

**HUPFER**  
we make work flow



### Технические характеристики

**Масса:** 0.1 кг

*Показан пример без декоративных элементов,  
точность технического описания не  
гарантируется.*

The reinforcement beams increase the stability and load capacity of the serving trolleys.

The reinforcement beams distribute the weight of the cargo evenly across the entire serving trolley. This minimises the risk of deformation or instability, especially with heavy or unevenly distributed loads. Thanks to the robust construction and the use of high-quality, recyclable stainless steel, the anti-sway bars also allow for a long lifespan and hygienic cleaning of your serving trolley, even with intensive use.

- for an even distribution of the cargo
- increases the stability and load capacity of the serving trolley
- made from high-quality, recyclable stainless steel for a long service life and hygienic cleaning

Дата обращения: 20.07.2025,  
09:13:01

*Значения величин и размеров являются приблизительными, точность  
технического описания не гарантируется. © Hupfer*