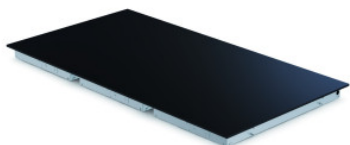


# Hotplate with glass top GN 1/1

Технические характеристики изделия 0164663 | WHP GLA GN 1/1

**HUPFER**  
we make work flow

## Технические характеристики



*Показан пример без декоративных элементов, точность технического описания не гарантируется.*

|                            |         |
|----------------------------|---------|
| <b>Полезная нагрузка:</b>  | 9       |
| <b>Мощность:</b>           | 300 W   |
| <b>Входное напряжение:</b> | 220 V   |
| <b>Номинальный ток:</b>    | 1,5 A   |
| <b>Класс защиты:</b>       | Class I |
| <b>Частота:</b>            | 50 Hz   |
| <b>Масса:</b>              | 5 кг    |
| <b>Ширина:</b>             | 330 мм  |
| <b>Глубина:</b>            | 530 мм  |
| <b>Высота:</b>             | 43 мм   |

The warming plate with a glass surface is used for the presentation and serving of food. The warming plate with a glass surface allows for the presentation of dishes in an appealing format and at consistent temperatures.

The elegant warming plate with a glass surface from Hupfer Metallwerke GmbH & Co. KG is the ideal solution for the attractive presentation and serving of food. The high-quality plate ensures constant temperatures and enhances every meal. The glass surface not only offers a stylish appearance but also allows for user-friendly handling for self-service, promoting efficiency in service. The durable ESG glass guarantees easy cleaning and maximum hygiene, while the robust construction ensures stability and resilience in daily use. With the warming plate from Hupfer, every dish becomes a focal point and the service a pleasure.

- Glass surface provides an elegant appearance and enhances the presentation of dishes.
- Suitable for self-service, it allows for user-friendly handling and promotes efficiency in service.
- High-quality ESG glass ensures durability and easy cleaning for optimal hygiene.
- Robust construction guarantees stability and load-bearing capacity in daily use.

Дата обращения: 03.04.2026,  
18:26:39

*Значения величин и размеров являются приблизительными, точность технического описания не гарантируется. © Hupfer*