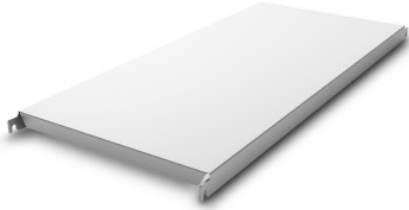


Norm 20 solid shelf 1400×300 mm

Технические характеристики изделия 0202783 | A-GS/N20 1400/300

HUPFER
we make work flow

Технические характеристики



Max. bay load	100
Carbon footprint (TM65 Midlevel Report)	52 kgCO ₂ e
TM65 Midlevel Report	Ссылка на сертификат
Масса:	2 кг
Ширина:	1400 мм
Глубина:	240 мм
Высота:	49 мм

Показан пример без декоративных элементов, точность технического описания не гарантируется.

The closed support made of anodised aluminium of the Norm 20 shelf provides a secure and hygienic storage surface for high load capacities. It is suitable for use at ambient temperatures of -30°C.

The effortlessly hook-on, closed support made of anodised aluminium provides a secure, easy-to-handle, and easy-to-clean storage surface. Despite its low weight, this support of the Norm 20 shelf can bear high loads. Temperatures of -30°C also pose no problem, even in the long term.

- Closed design in anodised aluminium with low weight ensures easy handling, safe, hygienic storage, and clear access at all times
- High-quality workmanship using premium aluminium enables perfect hygiene and easy cleaning
- Valuable materials ensure sustainability and preservation of value
- Robust construction guarantees high load capacity
- Modular system allows for easy handling from assembly to cleaning with minimal effort

Дата обращения: 22.04.2026,
21:29:18

Значения величин и размеров являются приблизительными, точность технического описания не гарантируется. © Hupfer