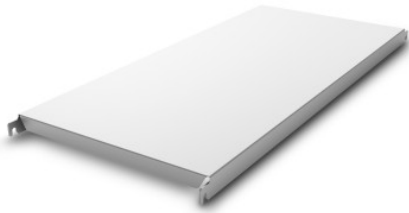


Norm 20 solid shelf 1500×600 mm

Технические характеристики изделия 0202893 | A-GS/N20 1500/600

HUPFER
we make work flow

Технические характеристики



| | |
|--|--------------------------------------|
| Max. bay load | 100 |
| Carbon footprint (TM65 Midlevel Report) | 97 kgCO ₂ e |
| TM65 Midlevel Report | Ссылка на сертификат |
| Масса: | 4 кг |
| Ширина: | 1500 мм |
| Глубина: | 540 мм |
| Высота: | 49 мм |

*Показан пример без декоративных элементов,
точность технического описания не
гарантируется.*

The closed support made of anodised aluminium of the Norm 20 shelf provides a secure and hygienic storage surface for high load capacities. It is suitable for use at ambient temperatures of -30°C.

The effortlessly hook-on, closed support made of anodised aluminium provides a secure, easy-to-handle, and easy-to-clean storage surface. Despite its low weight, this support of the Norm 20 shelf can bear high loads. Temperatures of -30°C also pose no problem, even in the long term.

- Closed design in anodised aluminium with low weight ensures easy handling, safe, hygienic storage, and clear access at all times
- High-quality workmanship using premium aluminium enables perfect hygiene and easy cleaning
- Valuable materials ensure sustainability and preservation of value
- Robust construction guarantees high load capacity
- Modular system allows for easy handling from assembly to cleaning with minimal effort

Дата обращения: 14.04.2026,
17:17:03

*Значения величин и размеров являются приблизительными, точность
технического описания не гарантируется. © Hupfer*