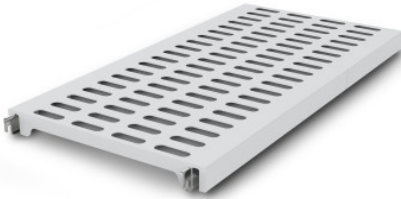


Norm 12 louvered shelf 600×600 mm

Технические характеристики изделия 0601579 | A-KR/N12 0600/600

HUPFER
we make work flow

Технические характеристики



Max. bay load	200
Carbon footprint (TM65 Basic Report)	25 kgCO ₂ e
Масса:	2 кг
Ширина:	600 мм
Глубина:	584 мм
Высота:	53 мм

*Показан пример без декоративных элементов,
точность технического описания не
гарантируется.*

Rust protection layer made of polystyrene segments with perforation 75 × 25 mm on aluminium support beams.

The effortlessly attachable plastic grid insert provides a ventilated, secure, and very easy-to-clean surface, even dishwasher-safe. Despite its low weight, the insert for the Norm 12 shelf supports high loads. Temperatures of -30°C are not a problem even in the long term.

The materials used are sustainable, 100% recyclable, and so valuable that Hupfer guarantees to buy back your entire shelf at the end of its service life.

- Rust-proof design in plastic with low weight ensures ventilated, safe, and hygienic storage while maintaining the condition of the stored goods.
- Quality craftsmanship using high-quality plastic enables perfect hygiene and easy cleaning, even in the dishwasher.
- Valuable materials ensure sustainability and preservation of value.
- Sturdy construction guarantees high load capacity.
- Modular system ensures easy handling from assembly to cleaning with minimal effort.

Дата обращения: 17.07.2025,
02:54:21

*Значения величин и размеров являются приблизительными, точность
технического описания не гарантируется. © Hupfer*