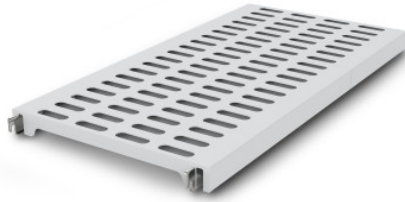


Norm 12 louvered shelf 900×600 mm

Технические характеристики изделия 0601719 | A-KR/N12 0900/600

HUPFER
we make work flow

Технические характеристики



Max. bay load	200
CO₂-Fussabdruck (TM65 Basic Report)	38 kgCO ₂ e
Масса:	3 кг
Ширина:	900 мм
Глубина:	584 мм
Высота:	53 мм

*Показан пример без декоративных элементов,
точность технического описания не
гарантируется.*

The easily hook-on plastic shelf for a ventilated, secure, and hygienic storage.

The effortlessly attachable plastic grid insert provides a ventilated, secure, and very easy-to-clean surface, even dishwasher-safe. Despite its low weight, the insert for the Norm 12 shelf supports high loads. Temperatures of -30°C are not a problem even in the long term.

- Rust-proof design in plastic with low weight ensures ventilated, safe, and hygienic storage while maintaining the condition of the stored goods.
- Quality craftsmanship using high-quality plastic enables perfect hygiene and easy cleaning, even in the dishwasher.
- Valuable materials ensure sustainability and preservation of value.
- Sturdy construction guarantees high load capacity.
- Modular system ensures easy handling from assembly to cleaning with minimal effort.

Дата обращения: 21.04.2026,
08:01:46

*Значения величин и размеров являются приблизительными, точность
технического описания не гарантируется. © Hupfer*