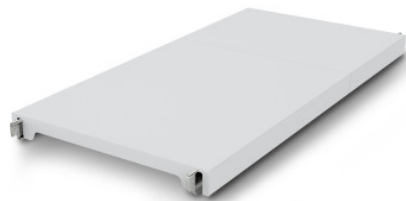


Norm 12 solid shelf 900×500 mm

Технические характеристики изделия 0602609 | A-GS/N12 0900/500

Технические характеристики



| | |
|--------------------------------------|------------------------|
| Max. bay load | 200 |
| Carbon footprint (TM65 Basic Report) | 39 kgCO ₂ e |
| Масса: | 3 кг |
| Ширина: | 900 мм |
| Глубина: | 484 мм |
| Высота: | 53 мм |

*Показан пример без декоративных элементов,
точность технического описания не
гарантируется.*

The closed plastic shelf surface of the Norm 12 shelving unit provides a lightweight, secure, and hygienic storage area for high load capacities. It is suitable for use at ambient temperatures of -30°C.

The effortlessly attachable, closed plastic tray offers a lightweight, safe, and very easy-to-clean surface, even in the dishwasher. This tray of the Norm 12 shelf can hold high loads despite its low weight. Temperatures of -30°C are not a problem even in the long term.

- Closed design in plastic with low weight ensures safe, hygienic storage and easy access at all times
- Quality workmanship from high-quality plastic allows for perfect hygiene and easy cleaning, even in the dishwasher
- Valuable materials ensure sustainability and value retention
- Stable construction guarantees high load capacity
- Modular system ensures easy handling from assembly to cleaning with minimal effort

Дата обращения: 09.10.2025,
21:59:17

*Значения величин и размеров являются приблизительными, точность
технического описания не гарантируется. © Hupfer*