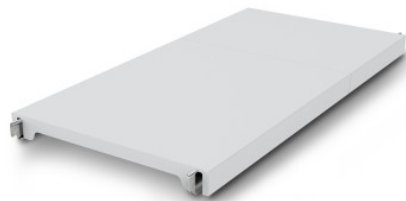


Norm 12 solid shelf 1000×400 mm

Технические характеристики изделия 0602679 | A-GS/N12 1000/400

HUPFER
we make work flow

Технические характеристики



Max. bay load	200
Carbon footprint (TM65 Basic Report)	39 kgCO ₂ e
Масса:	3 кг
Ширина:	1000 мм
Глубина:	484 мм
Высота:	53 мм

*Показан пример без декоративных элементов,
точность технического описания не
гарантируется.*

Closed support made of polystyrene segments on aluminium support beams.

The effortlessly attachable, closed plastic insert provides a lightweight, secure, and very easy-to-clean surface that can even be washed in the dishwasher. Despite its low weight, this insert of the Norm 12 shelf can hold high loads. Temperatures of -30°C are not a problem even in the long term. The materials used are sustainable, 100% recyclable, and so valuable that Hupfer already guarantees to buy back your entire shelf at the end of its service life.

- Closed design in plastic with low weight ensures safe, hygienic storage and clear access at all times.
- Quality workmanship of high-quality plastic enables perfect hygiene and easy cleaning, even in the dishwasher.
- Valuable materials ensure sustainability and value retention.
- Stable construction guarantees high load capacity.
- Modular system allows for easy handling from assembly to cleaning with minimal effort.

Дата обращения: 16.06.2025,
20:38:47

*Значения величин и размеров являются приблизительными, точность
технического описания не гарантируется. © Hupfer*