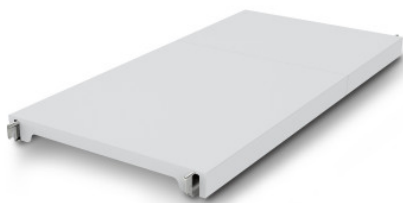


Norm 12 solid shelf 1400×400 mm

Технические характеристики изделия 0602799 | A-GS/N12 1400/400

HUPFER
we make work flow

Технические характеристики



Max. bay load	100
CO₂-Fussabdruck (TM65 Basic Report)	65 kgCO ₂ e
Масса:	4 кг
Ширина:	1400 мм
Глубина:	384 мм
Высота:	53 мм

*Показан пример без декоративных элементов,
точность технического описания не
гарантируется.*

The closed plastic shelf surface of the Norm 12 shelving unit provides a lightweight, secure, and hygienic storage area for high load capacities. It is suitable for use at ambient temperatures of -30°C.

The effortlessly attachable, closed plastic tray offers a lightweight, safe, and very easy-to-clean surface, even in the dishwasher. This tray of the Norm 12 shelf can hold high loads despite its low weight. Temperatures of -30°C are not a problem even in the long term.

- Closed design in plastic with low weight ensures safe, hygienic storage and easy access at all times
- Quality workmanship from high-quality plastic allows for perfect hygiene and easy cleaning, even in the dishwasher
- Valuable materials ensure sustainability and value retention
- Stable construction guarantees high load capacity
- Modular system ensures easy handling from assembly to cleaning with minimal effort

Дата обращения: 23.02.2026,
14:35:10

*Значения величин и размеров являются приблизительными, точность
технического описания не гарантируется. © Hupfer*